

Vice-President, Clinical Radiology

(Formally in the College's constitution, this role is named "Dean, Faculty of Clinical Radiology")

Eligibility and term of office

The Vice-President is a Fellow of the College by examination, resident in the United Kingdom and on the roll of the Faculty, who at the close of nominations for the office, is in active clinical practice and serves for a term of three College years.

Role and responsibilities

The Vice-President leads the work of the Faculty. The structure of the Faculty is appended.

The Vice-President is responsible for overseeing the development and delivery of the strategic work plan of the Faculty through the Faculty Board and with other Faculty Officers. This involves aiding the development of the specialty by ensuring that Faculty advice to Fellows and relevant bodies on all aspects of the Faculty's remit both pre-and post- the attainment of Certificate of Completion of Training are all kept up to date.

The portfolio of work which the Vice-President leads through the Faculty Board includes:

- commissioning short-life working parties to address issues that arise from time to time.
- advising and guiding College staff in the delivery of the Faculty work programme.

Together with the other Clinical Radiology Officers (Medical Director, Professional Practice and Medical Director, Education and Training), the Vice-President takes a full role as an Officer of the Faculty, will represent the College at external meetings, contribute overall to Faculty policy and determine the direction of issues as they arise.

The Vice-President deputises for the President as required.

The Vice-President is a member of the Joint Officers' Group which comprises the Officers of the College (President and Treasurer) and the Officers of both Faculties (in total eight Officers). The Group determines and takes forward business related to the work of the College as a whole and cross-Faculty issues.

As with all Officers, the Vice-President is a member of Council and as such is a Trustee of the College. Trustees are expected to play a full part in the governance and strategic direction of the College as a chartered corporation and a registered charity.

Regular attendance at College and Faculty boards and committees

College

Council (three per annum)

Finance and Investment Committee (two per annum)

Joint Officers (monthly except August)

Fellowship Ceremonies and Dinners (two per annum)

Honours Committee (annual)

Annual Scientific Meeting including the Annual General Meeting

Annual Dinner

Attendance required at one meeting annually of each of the three UK Standing Committees (devolved countries)

Lay Member Network (two per annum)

Faculty of Clinical Radiology

Clinical Radiology Officers (monthly except August – Chaired by the Vice-President)
Faculty Board (three per annum – Chaired by the Vice-President)
Faculty Clinical Excellence Awards Committee (annual, Chaired by the Vice-President)
Meeting of Special Interest Groups (annual – Chaired by the Vice-President)
Regional Chairs Committee (two per annum)
Clinical Imaging Board (three per annum)
Working parties of the Faculty Board

The Vice-President should also attend meetings of the Professional Support and Standards Board, the Specialty Training Board and the Academic Meetings (three per annum for each) when possible.

Time commitment

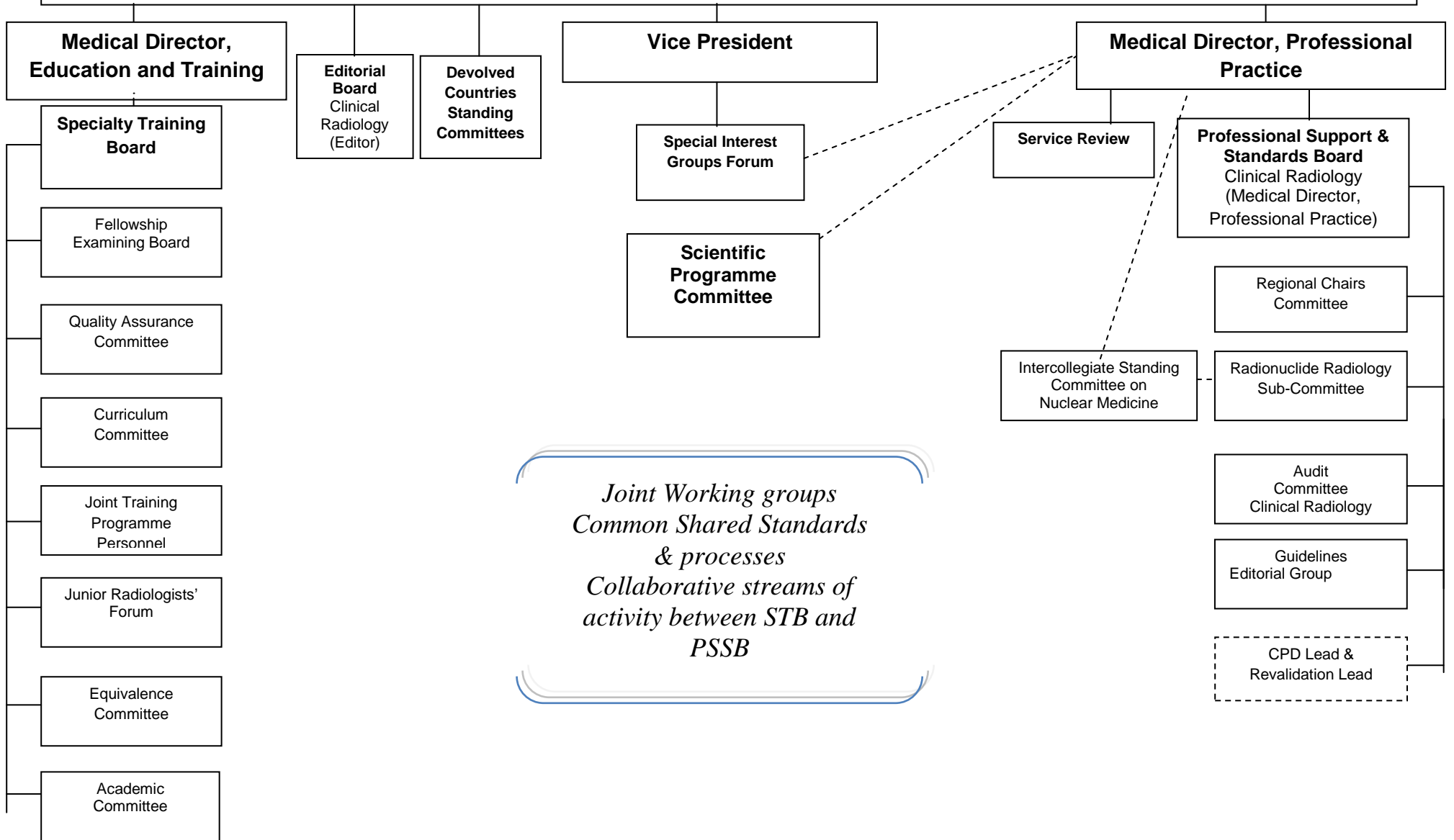
Most College committees are held on a Thursday or Friday. Officers' meetings are held on a Thursday evening and the following Friday morning. The commitment is about one to two days per week including meeting preparation time, plus travelling and reading time.

Support

Staff support for the Vice-President is led and managed by the Executive Director Professional Practice. Staff give policy guidance and advice, specialist support (e.g. workforce and audit), administrative and secretarial support.

October 2013

Board of the Faculty of Clinical Radiology



*Joint Working groups
Common Shared Standards
& processes
Collaborative streams of
activity between STB and
PSSB*