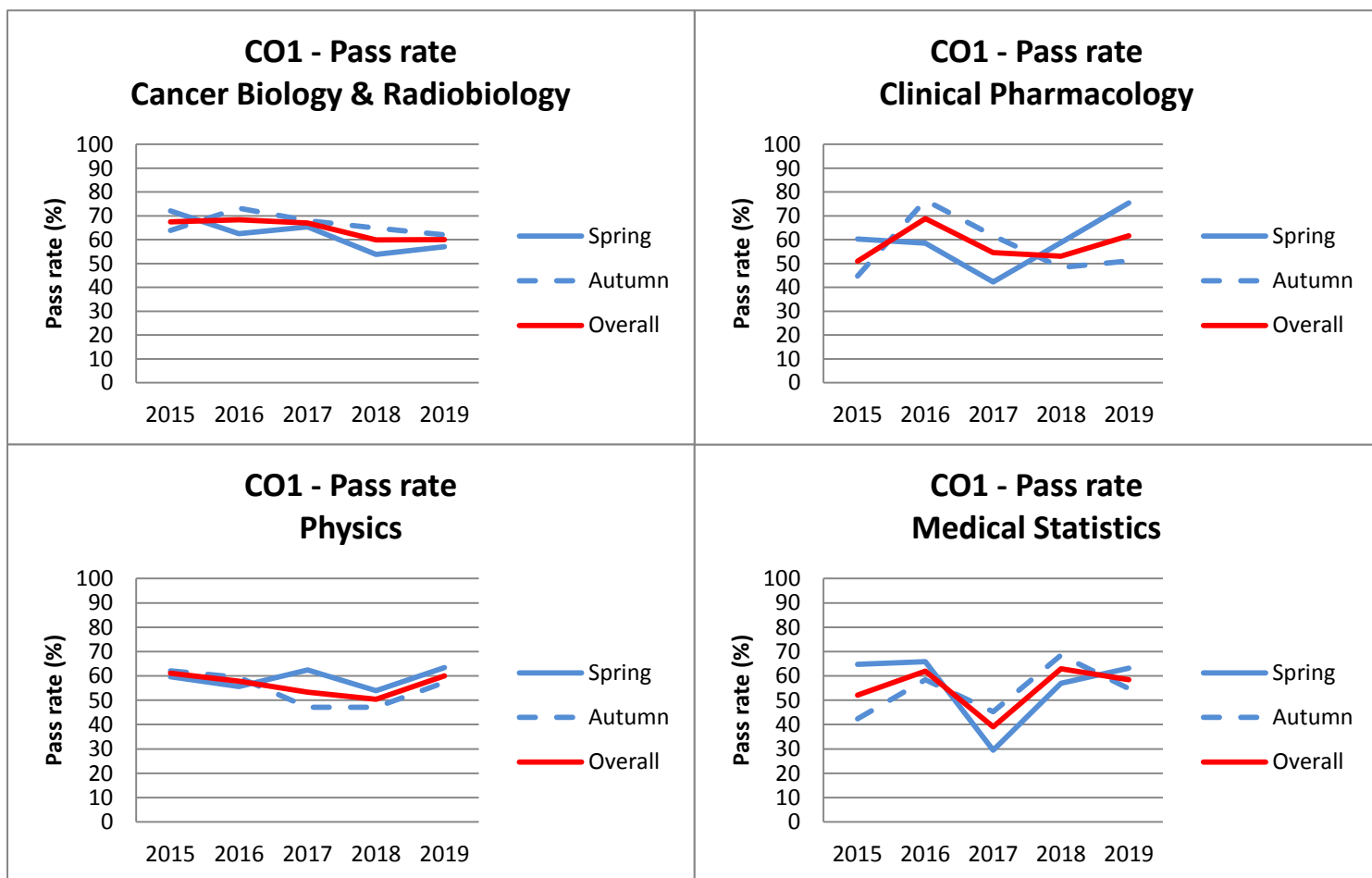


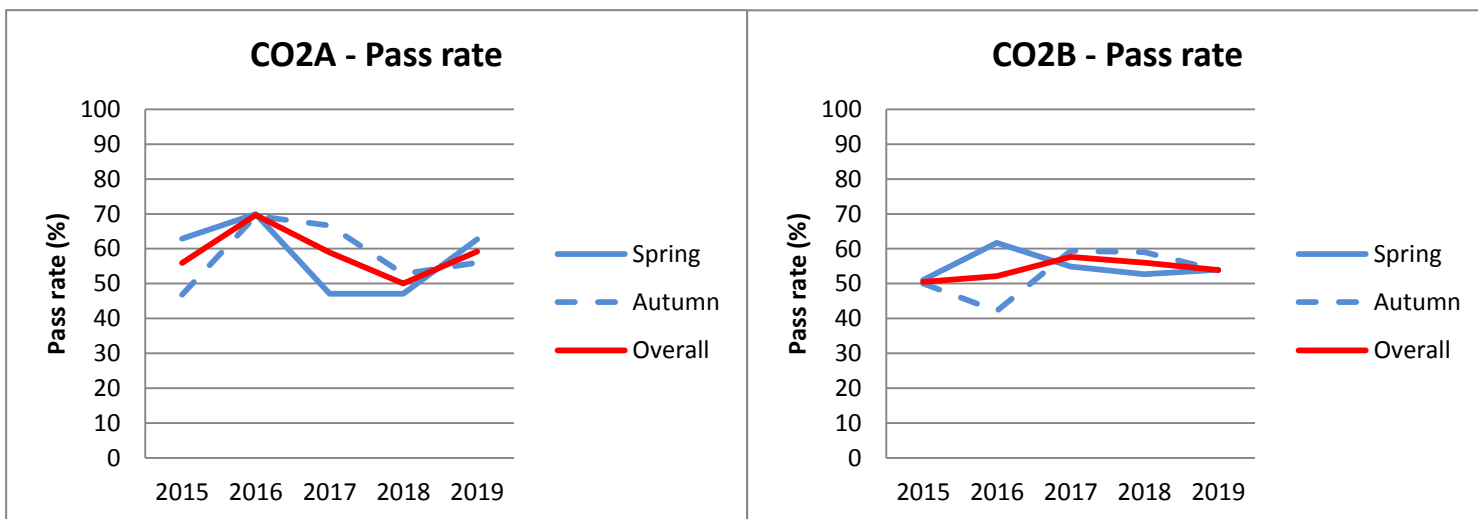
Clinical Oncology Examination Metrics 2015 - 2019

The following report is a summary of examination data over the last five years of sittings, including pass rates, sitting numbers and reliability scores.

Table 1: Pass rates

Pass rates %		2015	2016	2017	2018	2019
Cancer Biology & Radiobiology	Spring	72.1	62.5	65.4	53.8	57.0
	Autumn	63.9	73.2	68.3	64.9	62.0
	Overall	67.5	68.4	67.0	59.9	60.0
Clinical Pharmacology	Spring	60.3	58.6	42.3	58.8	75.5
	Autumn	44.7	76.5	61.7	48.3	51.1
	Overall	51.0	68.8	54.5	53.1	61.6
Physics	Spring	59.7	55.6	62.5	53.9	63.4
	Autumn	62.1	59.4	47.1	47.1	57.3
	Overall	61.1	57.8	53.3	50.4	60.0
Medical Statistics	Spring	64.8	65.9	29.5	57.0	63.2
	Autumn	42.4	58.4	45.3	68.5	54.8
	Overall	52.1	62.0	39.1	62.9	58.4
CO2A	Spring	62.9	70.0	47.1	47.1	62.7
	Autumn	46.8	69.4	66.7	52.8	56.0
	Overall	55.9	69.7	58.9	50.0	59.2
CO2B	Spring	51.0	61.7	54.9	52.7	54.0
	Autumn	50.0	42.1	59.4	59.0	53.8
	Overall	50.5	52.1	57.7	56.0	53.9





In 2019 the highest pass rate was in the CO1 Clinical Pharmacology module, Spring sitting (75.5%) and the lowest was in the same module in the Autumn sitting exam (51.1%).

Table 2: Candidate numbers by exam sitting

Candidate numbers		2015	2016	2017	2018	2019	Diff 2019-2018
Cancer Biology & Radiobiology	Spring	68	80	81	93	93	0
	Autumn	83	97	123	114	142	28
	Overall	151	177	203	207	235	28
Clinical Pharmacology	Spring	63	87	78	97	106	9
	Autumn	94	115	133	116	139	23
	Overall	157	202	211	213	245	32
Physics	Spring	72	81	80	115	112	-3
	Autumn	95	106	119	119	143	24
	Overall	167	187	199	234	255	21
Medical Statistics	Spring	71	91	88	121	95	-26
	Autumn	92	101	137	124	124	0
	Overall	163	192	225	245	219	-26
CO2A	Spring	62	70	51	68	83	15
	Autumn	47	49	78	72	91	19
	Overall	109	119	129	140	174	34
CO2B	Spring	51	60	51	55	63	8
	Autumn	48	57	69	61	78	17
	Overall	99	117	120	116	141	25
Total	Spring	387	469	429	549	552	3
	Autumn	459	525	658	606	717	111
	Overall	846	994	1088	1155	1269	114

Overall candidate numbers rise each year, however for CO1 it is the modular attempts which are counted, rather than actual number of candidates. Therefore the same candidate may be counted up to eight times in one year (if they sat all four modules at two sittings).

CO Sitting numbers by year

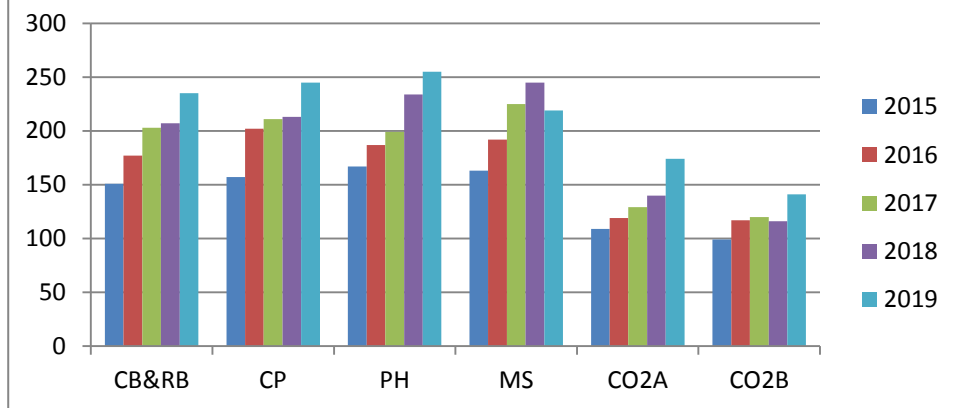


Table 3: UK trainee first attempt pass rates

		2015	2016	2017	2018	2019
Cancer Biology & Radiobiology	Spring	82.3	58.8	71.4	78.6	50.0
	Autumn	66.7	72.7	63.2	70.6	73.3
Clinical Pharmacology	Spring	68.4	47.1	45.5	72.8	60.0
	Autumn	48.1	91.7	64.4	60.0	72.3
Physics	Spring	60.0	50.0	69.2	69.2	63.6
	Autumn	67.3	73.7	49.1	56.5	67.4
Medical Statistics	Spring	69.6	73.7	60.0	83.3	62.5
	Autumn	58.8	81.8	39.7	78.7	85.0
CO2A	Spring	75.0	73.7	62.5	80.0	66.7
	Autumn	60.0	82.1	85.7	75.0	60.6
CO2B*	Spring	59.1	65.5	58.3	56.0	63.6
	Autumn	75.0	53.8	73.2	71.4	70.4

*For CO2B, candidates who have missed the first available sitting to attempt the exam (i.e. at the same sitting as passing CO2A), are still counted in the first attempt category.

Table 4: UK trainee first attempt sitting numbers

		2015	2016	2017	2018	2019
CBRB	Spring	17	17	14	14	18
	Autumn	54	33	57	51	45
	Overall	71	50	71	65	63
CP	Spring	19	17	11	11	20
	Autumn	52	36	59	50	47
	Overall	71	53	70	61	67
PH	Spring	20	18	13	13	22
	Autumn	52	38	55	46	43
	Overall	72	56	68	59	65
MS	Spring	23	19	15	12	24
	Autumn	51	33	58	47	40
	Overall	74	52	73	59	64
CO2A	Spring	20	19	16	25	24
	Autumn	25	28	42	28	33
	Overall	45	47	58	53	57
CO2B	Spring	22	29	12	25	22
	Autumn	20	26	41	28	27
	Overall	42	55	53	51	49

CO UK first attempt sitting numbers

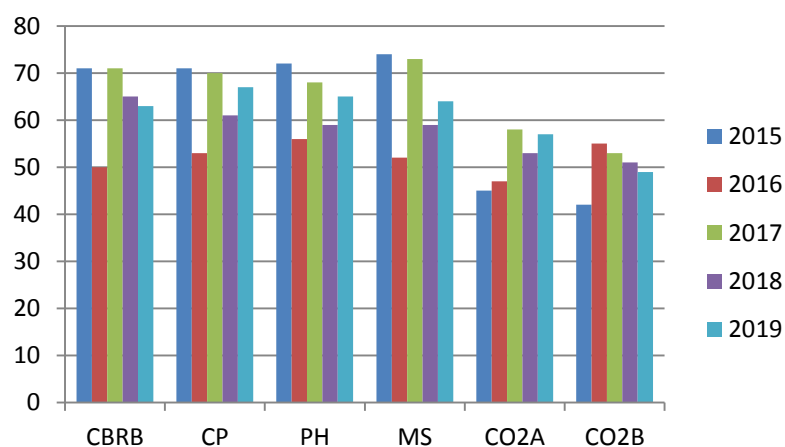


Table 5: Pass rates for UK trained and overseas (non-UK) candidates

		2015		2016		2017		2018		2019		Mean	
		UK	Non	UK	Non	UK	Non	UK	Non	UK	Non	UK	Non
Cancer Biology & Radiobiology	Spring	85.2	63.4	59.4	64.6	66.7	64.8	78.1	40.9	58.3	56.1	69.5	58.0
	Autumn	68.4	53.8	72.7	73.6	67.2	69.6	65.6	64.2	70.7	36.6	68.9	59.6
Clinical Pharmacology	Spring	64.3	57.1	64.3	53.3	47.6	40.4	87.9	43.8	66.7	80.6	66.2	55.0
	Autumn	54.8	25.0	83.7	72.2	62.5	60.7	61.7	33.9	66.1	40.0	65.8	46.4
Physics	Spring	68.4	44.1	55.0	56.1	74.1	56.6	65.1	47.2	70.6	56.5	66.6	52.1
	Autumn	67.7	51.5	73.6	45.3	46.2	48.1	55.7	37.9	64.9	52.3	61.6	47.0
Medical Statistics	Spring	75.0	51.6	72.5	60.8	48.3	20.3	71.1	48.7	66.7	60.4	66.7	48.4
	Autumn	55.7	16.1	72.1	46.6	46.6	43.5	74.2	62.9	70.6	43.8	63.8	42.6
CO2A	Spring	69.7	55.2	85.3	55.6	56.5	39.3	69.7	25.7	61.8	63.3	68.6	47.8
	Autumn	57.6	21.4	78.8	50.0	82.7	34.6	71.1	35.3	59.6	52.3	70.0	38.7
CO2B	Spring	58.5	20.0	72.1	35.3	75.9	33.3	62.2	33.3	62.5	45.2	66.2	33.4
	Autumn	61.1	16.7	54.3	21.1	73.9	30.4	69.0	36.8	70.3	39.0	65.7	28.8

Table 6: Sitting numbers for UK trained and overseas (non-UK) candidates

		2015		2016		2017		2018		2019	
		UK	Non	UK	Non	UK	Non	UK	Non	UK	Non
Cancer Biology & Radiobiology	Spring	27	41	32	48	27	54	32	61	36	57
	Autumn	57	26	44	53	67	56	61	53	58	82
Clinical Pharmacology	Spring	28	35	42	45	21	57	33	64	39	67
	Autumn	62	32	43	72	72	61	60	56	59	80
Physics	Spring	38	34	40	41	27	53	43	72	51	62
	Autumn	62	33	53	53	65	54	61	58	57	86
Medical Statistics	Spring	40	31	40	51	29	59	45	76	42	53
	Autumn	61	31	43	58	75	62	62	62	51	73
CO2A	Spring	33	29	34	36	23	28	33	35	34	49
	Autumn	33	14	33	16	52	26	38	34	47	44
CO2B	Spring	41	10	43	17	29	18	37	18	32	31
	Autumn	36	12	35	19	46	23	42	19	37	41
Yearly totals			518	328	482	509	533	551	547	543	725

The numbers given in this table may not exactly match previous data as they have been drawn from the database which shows the current training location of the individual, rather than at the time of sitting.

There is a steady increase in overseas candidate numbers. UK candidate numbers do not vary significantly year on year.

